

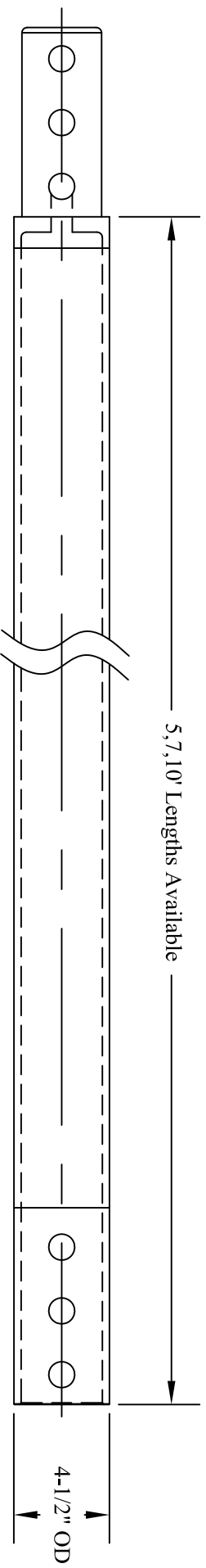
HOLE TO ACCEPT
1-1/8" DIA. BOLTS

Standard Helix Sizes	
Diameter (in)	Area (ft ²)
8	.239
10	.435
12	.675
14	.959
16	1.286

SHAFT DESIGNATION	
4 1/2 Tubular Leads	Torque Rating (lb-ft)
(0.250 wall)	30,000
(0.337 wall)	48,000

- NOTES:
- HOT DIPPED GALVANIZED PER ASTM A123
 - LEAD LENGTHS AND HELIX SPACINGS ARE NOMINAL
 - MATERIAL YIELD STRENGTH: 80KSI MIN FOR TUBULAR SHAFT, 50KSI MIN FOR, 3/8" OR 1/2" THICK PLATE/HELIX PER ASTM A572 G50
 - ALL WELDING TO BE DONE BY WELDERS CERTIFIED UNDER SECTION 5 OF THE AWS CODE D1.1
 - REFER TO DRAWING TE412 FOR EXTENSION SECTIONS


<p>HELICAL ANCHORS INC.</p> <p>THIS DRAWING CONTAINS CONFIDENTIAL INFORMATION OF HELICAL ANCHORS INC. THIS DOCUMENT MAY NOT BE REPRODUCED IN ANY FORM WITHOUT THE EXPRESS WRITTEN PERMISSION OF HELICAL ANCHORS INC.</p>		<p>4-1/2 TUBULAR LEADS</p>	
<p>DRAWN BY: DKM</p> <p>DATE: 11/04/10</p> <p>DWG NO.</p>	<p>SIZE: A</p> <p>PART/ CAT NO./ SKU NO.: TL412</p> <p>SCALE: NOT TO SCALE</p>	<p>REV</p>	

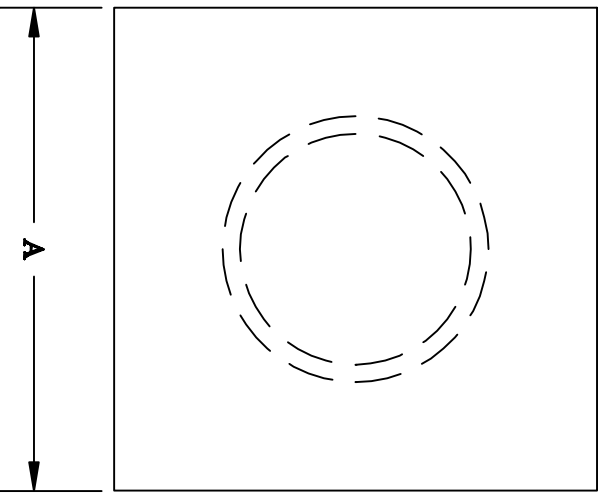


SHAFT DESIGNATION	
4 1/2 Tubular Extensions	Torque Rating (lb-ft)
(0.250 wall)	30,000
(0.337 wall)	48,000

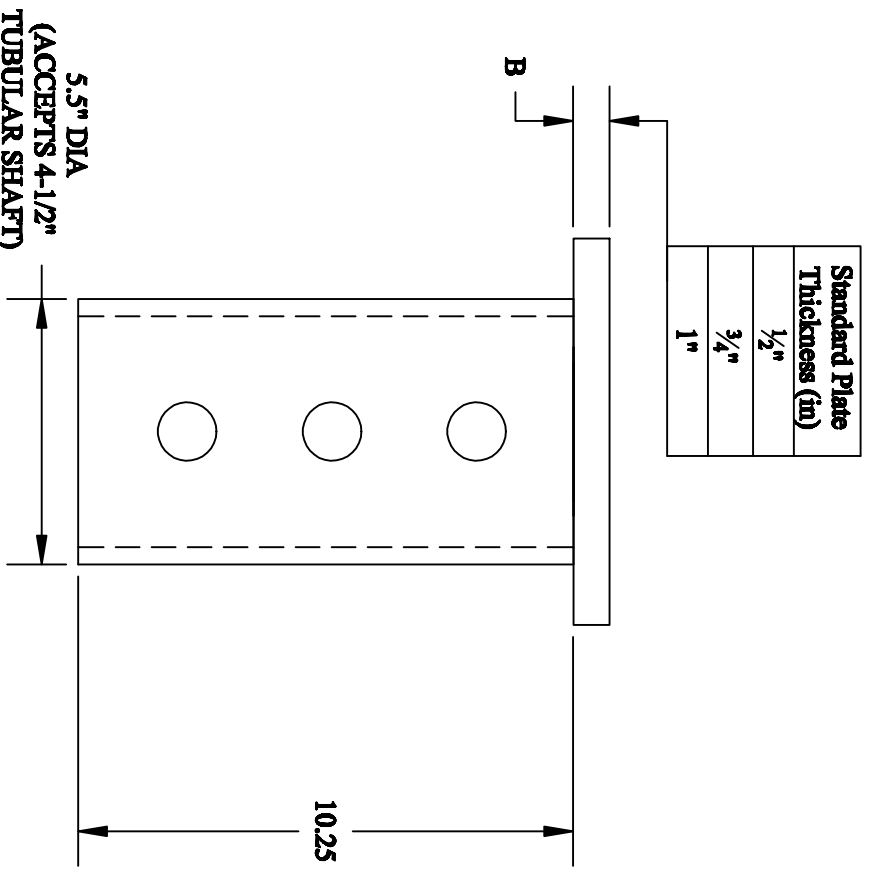
COUPLING BOLT AND NUT	
DESCRIPTION	BOLT TYPE
1-1/8" x 6.5" LONG H.H. BOLT	ASTM A325
1-1/8 HEX NUT	ASTM A325

- NOTES:
- HOT DIP GALVANIZED PER ASTM A123
 - MINIMUM YIELD MATERIAL STRENGTH: 80 KSI FOR TUBE, 107 KSI FOR PIN & BOX, 50 KSI FOR FLIGHTS (IF APPLICABLE)
 - HELICES ON EXTENSION ARE AVAILABLE IN 3/8" OR 1/2" THICK PLATE PER ASTM A572 G50
 - REFER TO DRAWING TL412 FOR LEAD SECTIONS
 - ALL WELDING TO BE DONE BY WELDERS CERTIFIED UNDER SECTION 5 OF THE AWS CODE D1.1

THIS DRAWING CONTAINS CONFIDENTIAL INFORMATION OF HELICAL ANCHORS INC. THIS DOCUMENT MAY NOT BE REPRODUCED IN ANY FORM WITHOUT THE EXPRESS WRITTEN PERMISSION OF HELICAL ANCHORS INC.		HELICAL ANCHORS INC. 	
DRAWN BY:	DKM	SIZE:	PART/ CAT NO. / SKU NO.
DATE:	11/02/10	A	TE412
DWG NO.		SCALE:	NOT TO SCALE
		SHEET	1/1



Standard Plate Sizes
Length x Width
8" x 8"
10" x 10"
12" x 12"



Standard Plate Thickness (in)
1/2"
3/4"
1"

COUPLING BOLT AND NUT	
DESCRIPTION	BOLT TYPE
1-1/8" x 6.5" LONG H.H. BOLT	ASTM A325
1-1/8 HBX NUT	ASTM A325

- NOTES:
1. FINISH: PLAIN OR GALVANIZED PER ASTM A123
 2. MATERIAL YIELD STRENGTH: 80KSI MIN FOR TUBE, 36KSI MIN FOR PLATE
 3. HOLE PATTERN SHALL MATCH THAT OF THE CORRESPONDING EXTENSION SECTION
 4. ALL WELDING TO BE DONE BY WELDERS CERTIFIED UNDER SECTION 5 OF THE AWS CODE D1.1

HELICAL ANCHORS INC.		Helical	
THIS DRAWING CONTAINS CONFIDENTIAL INFORMATION OF HELICAL ANCHORS INC. THIS DOCUMENT MAY NOT BE REPRODUCED IN ANY FORM WITHOUT THE EXPRESS WRITTEN PERMISSION OF HELICAL ANCHORS INC.		4-1/2 New Construction	
		5-1/2 OD Pipe	
DRAWN BY:	DLW	SIZE	PART / CAT NO. / SKU NO.
DATE:	02.04.16	A	NCCH412
DWG NO.		SCALE: NOT TO SCALE	
		SHEET	