

5,7,10' Lengths Available

Standard Helix Sizes	
Diameter (in)	Area (ft ²)
8	.298
10	.494
12	.734
14	1.018
16	1.345

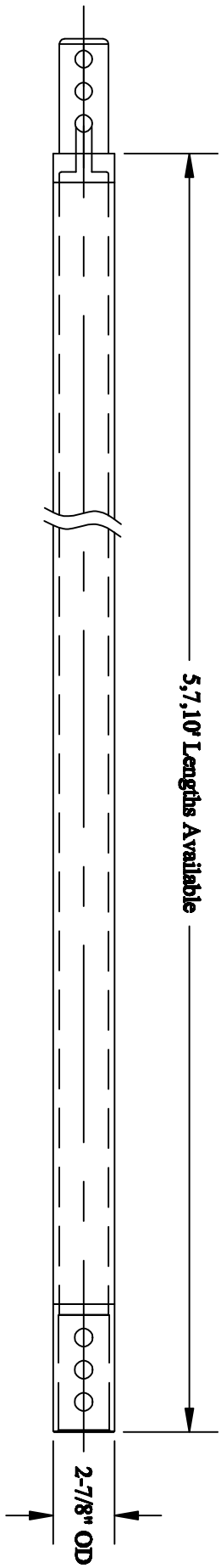
SHAFT DESIGNATION	
2 7/8 Tubular Leads	Torque Rating (lb-ft)
(0.217 wall)	13,000
(0.276 wall)	16,000

- NOTES:**
- HOT DIPPED GALVANIZED PER ASTM A123
 - LEAD LENGTHS AND HELIX SPACINGS ARE NOMINAL
 - MATERIAL YIELD STRENGTH: 80KSI MIN FOR TUBULAR SHAFT, 50KSI MIN FOR, 3/8" OR 1/2" THICK PLATE/HELIX PER ASTM A572 G50
 - ALL WELDING TO BE DONE BY WELDERS CERTIFIED UNDER SECTION 5 OF THE AWS CODE D1.1
 - REFER TO DRAWING TE278 FOR EXTENSION SECTIONS

HELICAL ANCHORS INC.

2-7/8 TUBULAR LEADS


<small>THIS DRAWING CONTAINS CONFIDENTIAL INFORMATION OF HELICAL ANCHORS INC. THIS DOCUMENT MAY NOT BE REPRODUCED IN ANY FORM WITHOUT THE EXPRESS WRITTEN PERMISSION OF HELICAL ANCHORS INC.</small>	
DRAWN BY: DKM	DATE: 06/16/10
SIZE: A	PART/CAT NO./SKU NO. TL278
DWG NO.	SCALE: NOT TO SCALE
	SHEET 1/1



SHAFT DESIGNATION	
2 7/8 Tubular Extensions	Torque Rating (lb-ft)
(0.217 wall)	13,000
(0.276 wall)	16,000

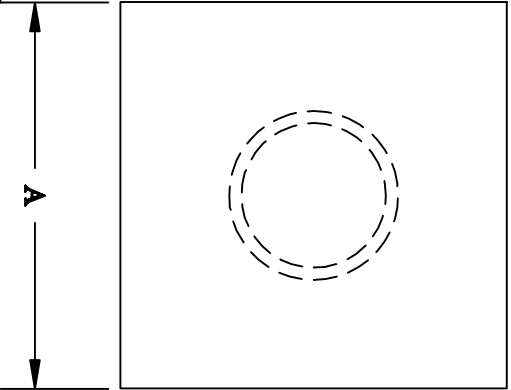
COUPLING BOLT AND NUT	
DESCRIPTION	BOLT TYPE
3/4" x 4" LONG H.H. BOLT	ASTM A325
3/4 HEX NUT	ASTM A325

- NOTES:**
- HOT DIP GALVANIZED PER ASTM A123
 - MINIMUM YIELD MATERIAL STRENGTH: 80 KSI FOR TUBE, 107 KSI FOR PIN & BOX, 50 KSI FOR FLIGHTS (IF APPLICABLE)
 - HELICES ON EXTENSION ARE AVAILABLE IN 3/8" OR 1/2" THICK PLATE PER ASTM A572 G50
 - REFER TO DRAWING TL278 FOR LEAD SECTIONS
 - ALL WELDING TO BE DONE BY WELDERS CERTIFIED UNDER SECTION 5 OF THE AWS CODE D1.1

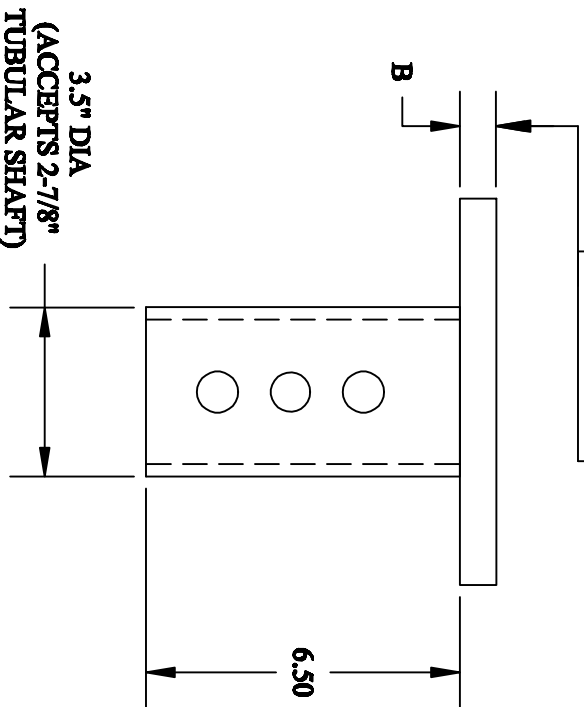
<small>THIS DRAWING CONTAINS CONFIDENTIAL INFORMATION OF HELICAL ANCHORS INC. THIS DOCUMENT MAY NOT BE REPRODUCED IN ANY FORM WITHOUT THE EXPRESS WRITTEN PERMISSION OF HELICAL ANCHORS INC.</small>		HELICAL ANCHORS INC. 	
2-7/8 TUBULAR EXTENSIONS		2-7/8 TUBULAR EXTENSIONS	
DRAWN BY:	DKM	SIZE PART/CAT NO./SKU NO.	REV
DATE:	10/19/10	A	TE278
DWG NO.		SCALE: NOT TO SCALE	SHEET 1/1

- NOTES:
1. FINISH: PLAIN OR GALVANIZED PER ASTM A123
 2. MATERIAL YIELD STRENGTH: 80KSI MIN FOR TUBE, 36KSI MIN FOR PLATE
 3. HOLE PATTERN SHALL MATCH THAT OF THE CORRESPONDING EXTENSION SECTION
 4. ALL WELDING TO BE DONE BY WELDERS CERTIFIED UNDER SECTION 5 OF THE AWS CODE D1.1

Standard Plate Sizes
Length x Width
6" x 6"
8" x 8"
10" x 10"
12" x 12"



Standard Plate Thickness (in)
1/2"
3/4"
1"



COUPLING BOLT AND NUT	
DESCRIPTION	BOLT TYPE
3/4" x 4.75" LONG H.H. BOLT	ASTM A325
3/4 HEX NUT	ASTM A325

HELICAL ANCHORS INC. helical

THIS DRAWING CONTAINS CONFIDENTIAL INFORMATION OF HELICAL ANCHORS INC. THIS DOCUMENT MAY NOT BE REPRODUCED IN ANY FORM WITHOUT THE EXPRESS WRITTEN PERMISSION OF HELICAL ANCHORS INC.

2-7/8 New Construction
3-1/2 OD Pipe

DRAWN BY:	DLW	SIZE	PART / CAT NO. / SKU NO.
DATE:	02.04.16	A	NCH278
DWG NO.		SCALE: NOT TO SCALE	